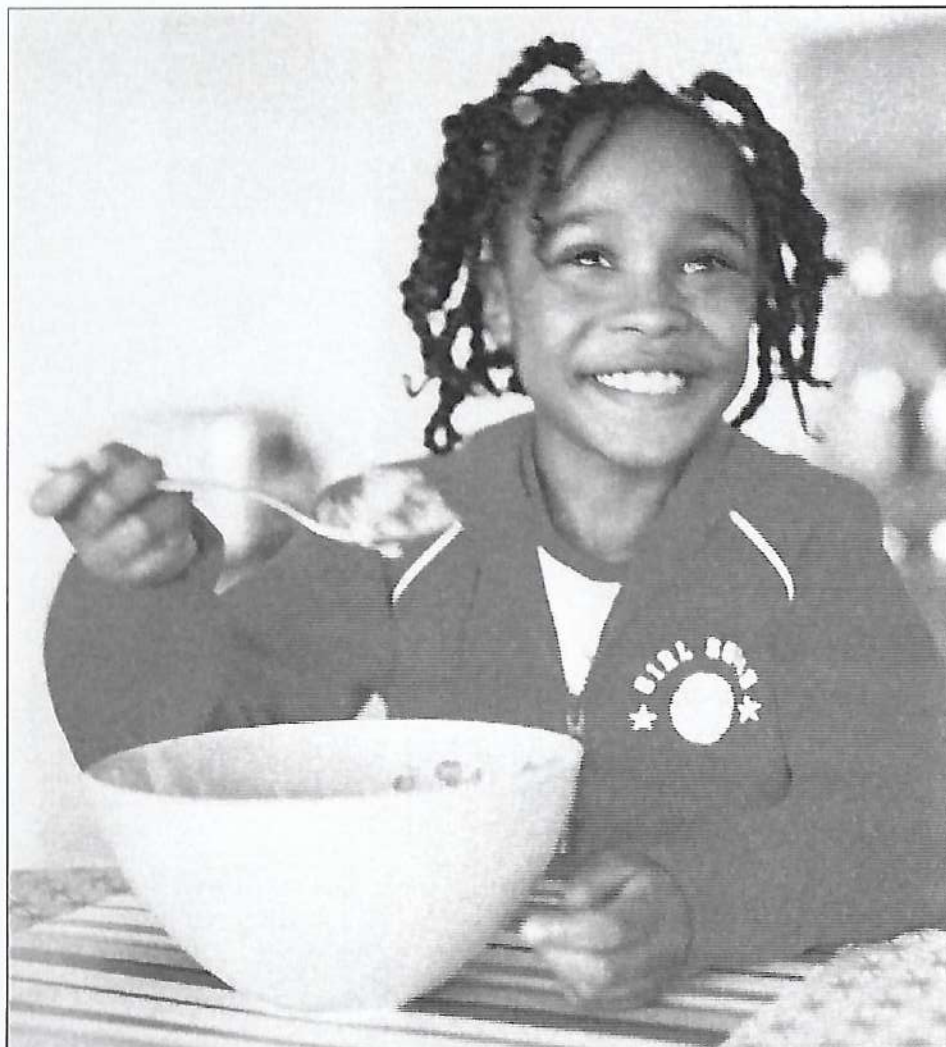


presents:

## Same Time, Next Year

On 23, 24, 25 February and 2, 3, 4 March, 2006  
at Baseldytschi Bihni, Lohnhof, Basel





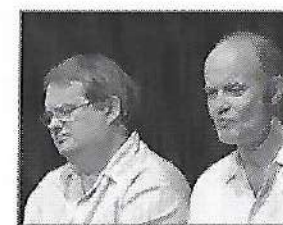
**Kid's stuff?** Remember when breakfast was fun, not a fight? Remember mum's cooking, and how much better food supposedly used to be? Well, breakfast should still be fun. And if mum's still cooking, it will be with better food than ever. Basel-based Syngenta helps farmers around the world bring in harvests our grandparents only dreamed of. And as theater is never just kids' stuff, we're also quick to help talents grow there. For more on water, memories and answers that won't kid you: [www.syngenta.com](http://www.syngenta.com)

**syngenta**

1951 ♥ 1952 ♥ 1953

**Welcome!** The Semi-Circle is a group of drama enthusiasts who have been bringing the best of English language theatre to Basel for thirty years. During that time we have managed to bring over 70 productions to venues in and around Basel. We stage plays of many different genres - from musicals to classical plays - and by a wealth of different playwrights, from Ayckbourn to Coward, Miller to Pinter, Shaw to Wilde.

Although our primary objective is to entertain with high quality English language theatre, we are also a club whose members enjoy getting together for occasional social activities. Members come from many different countries and walks of life - contrary to popular belief perfect English is not a prerequisite. Active members can be found not just on stage, but also working hard back or front of stage (or both).



### Next Production:

In September we will perform one-act plays in "Das Neue Theater am Bahnhof Dornach". This is a very attractive small theatre in Dornach, very close to the tram stop and the main-line station, itself just an eight minute train ride from the Basel main station. In addition there are plenty of possibilities for parking near the theatre in Dornach. If you would like to receive a flyer for this production please fill in the form enclosed in this programme.

We thank you for coming tonight and we hope that you enjoy "Same Time, Next Year"

**Bergli**

bookshop

Your special English bookshop  
right in the heart of Basel

- the meeting place for the Swiss and international English-speaking community
- novels, thrillers, books on world affairs, business, language learning and for children
- on-line ordering through [www.bergli.ch](http://www.bergli.ch)
- Talk Parties, book discussion groups, readings and other events

Bergli Bookshop

Rümelinsplatz 19, CH-4001 Basel,  
Tel.: 061 373 27 77, Fax: 061 373 27 78  
E-mail: [info@bergli.ch](mailto:info@bergli.ch) [www.bergli.ch](http://www.bergli.ch)



1954 ♥ 1955 ♥ 1956



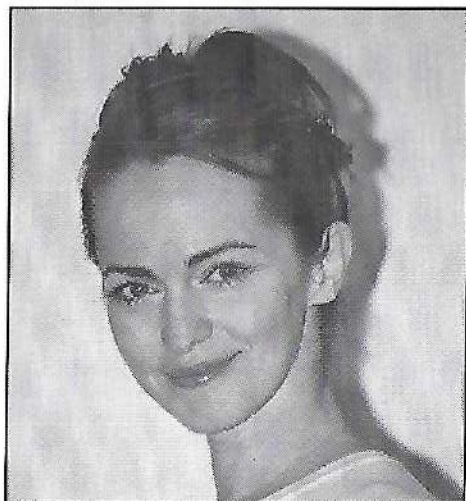
presents:

# Same Time, Next Year

by Bernard Slade

Directed by Angela Robinson

## Cast and director portraits

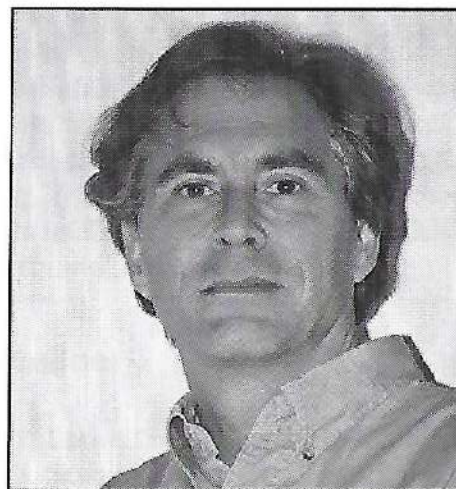


**Stephanie Nemeth-Parker**  
as Doris

Stephanie has been a member of The Semi-Circle for 5 years, but having another son has kept her away for almost 2 years and she can't wait to get back onstage. She has been lucky enough to study acting in LA and feels very lucky to be working with such a wonderful cast and crew here. She only hopes she hasn't been too long away from the stage!

Special thanks go to her super supportive husband Josi who babysits on those long nights of rehearsals and performances; and, on March 2, an especially big thank you to her mother who labored long hours to give birth to her on this day, some 20 odd years ago...

1957 ♥ 1958 ♥ 1959



**Jamie Sievert**  
as George

I'm going home again for this play – not Southern California this time, but a small inn way up on the shores of Mendocino county. It's the coast in February, a deserted beach full of sculpted driftwood and a low-angled sun reflecting brilliantly on the ocean. Low-lying cypress trees and towering redwoods complete the backdrop.



**Angela Robinson**  
Director

This is the 28<sup>th</sup> play, panto or musical that Angela has directed; the fifth for The Semi-Circle and the second at the Baseldytschi Bihni. She also loves doing costumes (e.g. "A Slice of Saturday Night") and actually getting on stage herself (e.g. "The Memory of Water").

She and her family left England 30 years ago and have since lived in Wales, Tanzania, Kenya, Switzerland and now France. She speaks Swahili better than German, but is getting quite good at Scrabble in French.

# *Make your money grow!*

- 🌐 Swiss, UK and Offshore Investment Funds
- 🌐 Pension transfers
- 🌐 Education Fee Plans
- 🌐 Tax efficient Savings Plans
- 🌐 Legal and Tax Advice
- 🌐 Tax Returns
- 🌐 Company Start-ups
- 🌐 Property Advice (Switzerland, France, UK)

**Tel. (061) 206 8800**

**[www.gmacg.com](http://www.gmacg.com)**

*Grether MacGeorge GmbH*  
Anglo-Swiss Independent Financial Advisers  
Austrasse 95, 4051 Basel  
[solutions@gmacg.com](mailto:solutions@gmacg.com)

1960 ♥ 1961 ♥ 1962 ♥ 1963

## **Same Time, Next Year**

Bernard Slade's play about infidelity is a romantic comedy that remains as delightful and funny today as it was when first performed 30 years ago. Above all, it provides wonderful snippets of American life across three decades. George picks up Doris in a California inn. Surprisingly for both of them, their steamy weekend becomes a once-a-year love affair. The play gives us a glimpse of six of these yearly rendezvous, spanning 25 years of the couple's relationship.

## **Timeline:**

Act 1, Scene 1: February 1951

Act 1, Scene 2: February 1956

Act 1, Scene 3: February 1961

**20 minute interval with bar service.**

Act 2, Scene 1: February 1965

Act 2, Scene 2: February 1970

Act 2, Scene 3: February 1975

## **Kosmetik-Studio Artistik**

Inh. N. Zuger  
Tulpenweg 21  
4153 Reinach  
Telefon 061 711 10 21

### **Öffnungszeiten:**

Mo.-Do. 08.30-12.00 Uhr  
14.00-18.30 Uhr  
Fr. 14.00-18.30 Uhr



1964 ♥ 1965 ♥ 1966

## Bernard Slade - The Playwright



Bernard Slade was a writer who proved you cannot typecast. He went from creating and writing some of the frothiest, silliest sitcoms in American TV history, (e.g., "The Flying Nun", "The Partridge Family") to writing insightful Broadway plays about relationships and love (e.g., "Same Time Next Year", "Tribute").

Slade began his career as an actor in his native Canada, performing with the Garden Center Theatre in Vineland, Ontario. By 1954, he was producing plays for the theater as well. Within a few years he was penning episodes of anthology programs produced by the Canadian Broadcasting Corporation. He even sold four scripts to

the "U.S. Steel Hour". Slade did not abandon theater, either, and by the end of the 50s he had begun to write plays. "Simon Says, Get Married" was produced in 1959, followed by "A Very Close Family" (1961). By the mid-60s, however, he had decamped to Hollywood and turned to a career as a TV writer, working on many popular sitcoms of the day, including "Bewitched". Despite his success in TV, Slade returned to his first love in the mid-70s with "Same Time Next Year", which proved to be hit, due partly to the casting of leads Charles Grodin and Ellen Burstyn. Slade received a Drama Desk Award and Tony nomination for Outstanding Play. He followed with "Tribute" (1978), the story of a son who learns to loosen up and love the father who might not have always been there for him, but is beloved by everyone in the theater district. Again, aided by Jack Lemmon's performance, the show proved to be successful.

1967 ♥ 1968 ♥ 1969

## Baseldytschi Bihni

For 110 years the Baseldytschi Bihni has been a jewel here in the heart of Basel. The Baseldytschi Bihni is as much a part of Basel as the Rhine, the "Lägerli" or the Fasnacht. Founded in 1892 under the name "Dramatic Society", it changed its name to the Baseldytschi Bihni in 1925 reflecting its purpose of performing plays in the Basel dialect. The Baseldytschi Bihni uses amateur actors under professional direction to supply a Basel style of quality entertainment. The club has 2000 members, one hundred of whom are voluntary active members. Ten of these idealists act and ninety help behind the scenes, offer technical support, help in the Foyer or in the administration of the club.

## Bookworm heaven.

Get a little closer to paradise  
at North-Western Switzerland's largest  
English bookshop.

At Bankenplatz, Aeschenvorstadt 2, CH 4010 Basel  
T (+41) 061 206 99 99, F (+41) 061 206 99 90  
[www.biderundtanner.ch](http://www.biderundtanner.ch)

**Bider&Tanner**  
Your English Bookshop at Bankenplatz



1970 ♥ 1971 ♥ 1972

## Production Team

Production Manager	Christine Comerçi
Promotion	Tony O'Sullivan, Michael Clarke
Graphic Design	Krista Jaquet, Michael Clarke
Photography	Ute Kessel Rüdiger Kessel
Programme and Publishing	Krista Jaquet, Joy Scherer
Printing	Wohn- und Bürozentrum für Körperbehinderte ( <a href="http://www.wbz.ch">www.wbz.ch</a> )
Time Capsule Media Show	Krista Jaquet, Christopher Morrison
Stage Manager	Susanne Thommen
Stage Crew	Susan Aeschbach, Carol Rees
Prompters	Diana Zuger, Donna Tomlinson
Technical Manager	Robi Pipoz
Set Design	Robi Pipoz
Costume Design	Angela Robinson, Marlis Miller
Costume Assistance	Graeme Knowd
Make-up Consultant	Helen Baldomero
Make-up	Mary Sinnott

### Acknowledgements:

- Thanks to the Sievert family for lending us some photos for Time Capsules.
- Thanks to Sue Stafford for the loan of wigs.

As always, there are many dedicated people involved in getting a production off the ground. All jobs, no matter how small, contribute to the final result that adds to the thrill of the theatrical experience. And, as always, we cannot possibly mention all those who deserve a mention, so we would like to express heartfelt thanks to all those not mentioned by name who gave of themselves for love of the theater.

1973 ♡ 1974 ♡ 1975

**Join us!**

**www.semi-circle.ch**

As you sit there waiting for the lights to go down, the music to play and the story to unfold, you may wonder how all this is arranged and organised, who are the people involved and why?

Well, it is just a bit puzzling. After all, our spare time is precious to us so why spend it involved in amateur dramatics? Some explanation is to be found in the biographies of the cast and director. Of course, other than those you see on stage, there are many more less visible team members who help plan, organise, support and execute the action that is seen on stage, from sound and lighting to props and paying the royalties; more such retiring creatures are to be found serving behind the bar, pushing buttons at the lighting and sound desks and sneaking behind the curtain. Our members come from many different countries and backgrounds. If you are curious enough to try-out, either on stage or in a less conspicuous place please fill in the card in this programme, ring Tony O'Sullivan (the president of The Semi-Circle) - +41 -(0)61 692 3901, or fill in the card in this programme or visit our website [www.semi-circle.ch](http://www.semi-circle.ch).

**Get your words' worth**

proofreading  
correspondence  
text design  
language editing  
translations  
German English French

**and bring your texts into focus**

Komm.Text.Korr.d.e.f.  
Hanne Sieber  
Römerstr. 11, CH-4114 Hofstetten  
Tel 061 733 93 73 Fax 061 733 93 70  
e-mail: hsieber@kommtextkorr.ch

# Wir machen kein Theater.

JAUQUET TECHNOLOGY GROUP offers the world's most versatile and advanced range of solutions for the detection, measurement, diagnosis and management of rotational speed. Our industry and application specific expertise ensures you achieve an optimum solution. Completely matched to your individual requirements, meeting key industrial standards and certifications, our products help boost the performance of your machinery whilst reducing cost of ownership.

**JAUQUET**  
TECHNOLOGY GROUP

[www.jaquet.com](http://www.jaquet.com)