

## Previous Semi-Circle Productions

Wilde	- Lord Arthur Saville's Crime (reading, May 1975)
Shaw	- Heartbreak House (reading, December 1976)
-	- Jubilee Review (jointly with the Flowing Bowl, May 1977)
Melville	- Dear Charles (January 1978)
-	- Old Time Music Hall (jointly with The Flowing Bowl, September 1978)
Coward	- Hay Fever (January 1980)
-	- A Seaside Show (jointly with The Flowing Bowl, October 1980)
Wilde	- The Importance of Being Earnest (February 1982)
Coward	- Present Laughter (February 1983)
Coward	- Blithe Spirit (February 1984)
Rattigan	- Separate Tables (March 1985)
Williams	- Night Must Fall (March 1986)
Coward	- Fumed Oak (Workshop, May 1986)
Chinn	- A Respectable Funeral (Workshop, January 1987)
Shaw	- Pygmalion (February 1987)
-	- The Paradise Pageant (at the 1st Festival of English-Speaking Theatre in Berne, April 1987)
Hughes	- Red Carnations (Workshop, August 1987)
St Vincent Millay	- Aria da Capo &
Townsend	- Womberang (Workshop, November 1987)
-	- The Paradise Pageant &
-	- The Nativity Pageant (for charity, December 1987)
van Druten	- I Remember Mama (March 1988)
Shirley	- Bus Stop,
Pertwee	- Postal Order &
Chinn	- From Here to the Library (Workshop, May 1988)
Chinn	- A Respectable Funeral (Workshop, September 1988)
-	- The Paradise Pageant &
-	- The Nativity Pageant (for charity, December 1988)
Congreve	- Love for Love (February/March 1989)
Mortimer	- Knightsbridge &
Shirley	- Round and Round the Gooseberry Bush (May 1989)
Kilty	- Dear Liar (September 1989 & November/December 1989)
Pinter	- 5 Revue Sketches (at the 2nd Festival of English-Speaking Theatre in Berne, October 1989), also in Basle (November 1989) together with:
Chinn	- Too Long an Autumn (November 1989)
Dickens	- A Christmas Carol (reading, for charity, December 1989)
Miller	- The Crucible (February 1990)

The Semi-Circle Basle  
presents

# Queer Street

by  
John Donald Kelly

directed by

Joy Scherer  
and  
Oscar Baldomero

and

# Departure

by  
Stephen Smith

directed by

Muriel Taylor





Sonia Dell



Sue Stafford



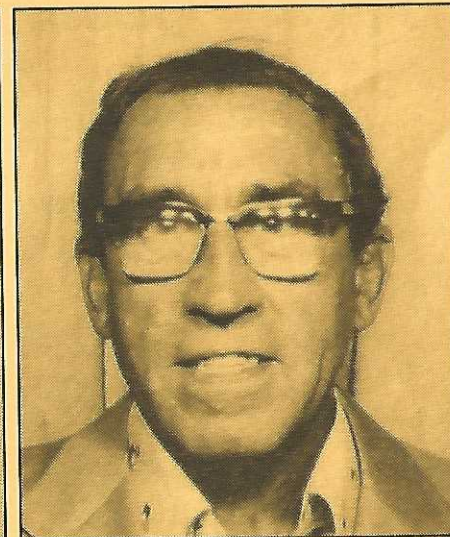
John Stafford



Dennis Dell



Joy Scherer



Ted Ford

---

Grammohaus *L.L.* Lothar Löffler

Das neu umgebaute Schallplatten-  
fachgeschäft mit der grossen Auswahl  
und der gediegenen Atmosphäre.

Der Name des Geschäftes bürgt für  
persönliche Beratung und individuelle  
Bedienung.

Wir freuen uns auf Ihren Besuch.

Das Grammohaus Lothar Löffler



# Queer Street

by  
**John Donald Kelly**

directed by  
**Joy Scherer**  
and  
**Oscar Baldomero**

## *Characters*

Mrs Hart	Sue Stafford
Mr Hart	Ted Ford
Edith, their daughter	Tania Guenter
Albert Smith	Allan Saunders
Joe Smart	Andrew Steel
A Detective	Bryan Taylor
Prompter	Sheila McKenzie

The action of the play passes in the sitting room of a house somewhere in London.  
Time - the thirties.

Bill Hart earns a comfortable, if somewhat perilous living as a burglar, but his equilibrium is shockingly upset when his daughter Edith becomes engaged to one Albert Smith - a policeman. That night when Albert calls, Bill pretends to be a plumber.

After *Queer Street* there will be an interval of 20 minutes.

# Departure

by  
**Stephen Smith**

directed by  
**Muriel Taylor**

## *Characters*

Rosemary Gibbs	Sonia Dell
Mandy Gibbs	Helen Baldomero
Dennis Tippitt	Kevin Hill
Sheila Tippitt	Caroline Weisskopf
Prompter	Jacintha Horowitz

The action takes place on a Sunday afternoon in October in a secluded corner of a departure lounge at Gatwick Airport. Time - the present.

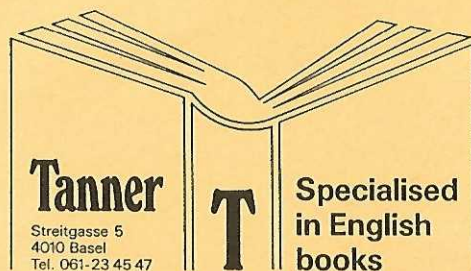
Stranded during the inevitable delay of a holiday flight to Spain, Rosemary - "I'm a one-parent family, you see" - and her not-very-bright daughter, Mandy, draw the reluctant Dennis and Sheila Tippitt into conversation. Sheila has suggested a holiday to try to right her ailing marriage. Rosemary is looking for a husband for Mandy. The comic tone of the play shifts continually between Rosemary's malapropisms and Dennis's grimly humorous bigotry.



## Behind the Scenes

Production Manager	Dennis Dell
Technical Director	Roger Kleiber assisted by Peter Degen, Ken Stedman
Stage Manager	Jennifer McFadden
Properties	Martin Spohn
Wardrobe	Frau Studinger, Ruth Meier
Make-up	Jenny Aellig, Rosanna Niklaus
Publicity	Rudolf Kuster
Programme	Theo Bucher
Box Office	Diana Zuger
Front of House	John Stafford assisted by Gideon Dell, Rupert Dell, Andrea Hunziger, Gillian Jespersen, Joan Kuster, Marianne Kuster, Anita Scherer, Belinda Scherer, Natalie Zuger

The Semi-Circle wishes to thank the Stadttheater Basel for the loan of costumes and scenery. Our thanks are also due to several members of the Semi-Circle not mentioned by name. *Queer Street* and *Departure* are produced by special arrangement with Samuel French Ltd, London.



## About the Semi-Circle

The Semi-Circle is a non-profitmaking association devoted to the furtherance of English-speaking theatre in the region of Basle and the public performance of dramatic works in the English language. The foundation stone of the society was laid in 1967 when a few members of the British Circle Basle began to meet regularly to read English plays. The play readings were informal events done solely for the entertainment of the participants. Later, Peter G. Broberg, who had trained in acting and production, agreed to help the group form a drama society and the Semi-Circle was born. The Semi-Circle was initially sponsored by the British Circle Basle but it is now a fully independent society.

The first two productions were rehearsed public readings of well known plays which took place in 1975 and 1976. These were followed in 1977 by the first of three revues, produced jointly with a group of singers calling themselves The Flowing Bowl. The Semi-Circle's first performed play was Alan Melville's *Dear Charles* in 1978. The first play performed at our 'home' theatre for major productions - the Baeumlihof Gymnasium - was Oscar Wilde's *The Importance of Being Earnest* in 1982. Since then the Semi-Circle has run an unbroken series of major productions there every season in February/March. Most of these have been directed by Richard Levitt of the Scuola Cantorum Basiliensis.

Smaller 'workshop' productions begun in 1986. These events were started with the aim of encouraging the increasing number of eager members with little or no previous stage experience to 'try their hand', and from this has grown a series of one-act play evenings. The first of these was directed by Muriel Taylor and performed in the cellar theatre of the *Schoenes Haus*, which belongs to the Department of English Studies of the University. More recently, in 1989, we were fortunate in being able to stage two such productions at the *Theater Vis-a-Vis*, each of which ran for 4 nights. Sadly, this delightful little theatre is no longer available.

There are a number of English-speaking drama clubs in other Swiss cities and in 1987 we all banded together to produce the first Festival of English-Speaking Theatre in Switzerland and a second festival took place in 1989, both of these in Berne. Since 1987 our activities have also included Christmas charity productions directed by Norman Koeth. 1989 was the semi-Circle's busiest year to date with 29 public performances of various pieces in 19 full evenings of entertainment.

Apart from productions for public performance we also still organise informal play-readings which can be attended by all members who are interested. New members, with or without experience, are always welcome - on stage, behind the scenes or front of house. If you would like to join us, or if you would just like to be informed of our events regularly by post, please contact our club secretary:

Joan Kuster, Mattweg 100, 4144 Arlesheim Tel. 061 - 701 62 73