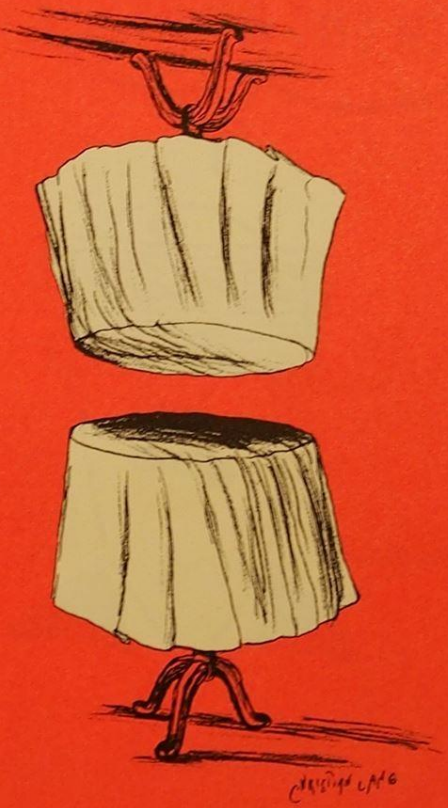


The Players  
and the Director



The Semi-Circle presents  
Terence Rattigan's

# Separate Tables



Director:  
Richard Levitt  
March  
13/14/15/16  
at 8 p.m.  
Gymnasium  
Bäumlihof

## The Semi-Circle

The theatre group dates back to 1967 when a few members of the British Circle in Basle got together regularly to read English plays. The play-reading evenings were very informal and intended for their own entertainment, but they did give one public presentation for the British Circle. When the leader of the group left Basle, the group disbanded for some time but the decision to revive the play-readings coincided with the "discovery" of Peter Broberg who had trained in acting and production at the Guildhall School of Music and Drama in London. He agreed to help them form a drama group and so "The Semi-Circle" was born. The name stems from the British Circle, who first sponsored them and the semi-circle of chairs used in public play-readings. They are

new a fully independent society. Theatre being very much a part of the British way of life - most towns and even many small villages in Great Britain have amateur dramatic societies - most of the members had had some previous experience, while others were absolute beginners. They rehearsed in private homes, in a Fasnacht cellar and in a room at the Blich, the scene of their first play-reading evenings in 1967. The first public play-reading in 1973 under Peter Broberg's direction was Oscar Wilde's "Lord Arthur Savile's Crime" followed by George Bernard Shaw's "Heartbreak House". Amateur theatre productions such as these mean a great deal of hard work but they also give the members a lot of fun and, it is hoped, a great deal of pleasure to the audiences.

New members (with or without experience) are always welcome on stage, backstage or front of house.

A word from the director, Richard Levitt:  
This year, the Semi-Circle has decided to depart from its usual light fare in favour of a more serious play, *Separate Tables*, by Terence Rattigan, is a slice of English life set into two one-act plays which remain interrelated. The play is rich in character studies and will afford our actors a chance to explore their own dramatic abilities. It is a play that has warmth and humour, as well as taut dramatic moments.

The semi-circle Basle presents *Separate Tables* by Terence Rattigan.

March 13-16, 1985  
Bäumlihof Gymnasium

Advance booking:  
Musik Hug



A scene from 'The Importance of Being Earnest' with G. Simons as Ernest and Lisa as Cecily at Gymnasium